

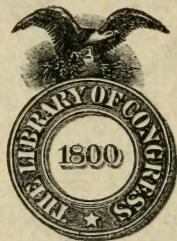
F

394

S2 S23

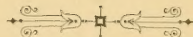
San Antonio



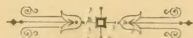


SAN ANTONIO

ILLUSTRATED.



IN PHOTO-GRAVURE
From Recent Negatives.



Copyright, 1892, by A. Wittemann, 67 & 69 Spring Street, N. Y.

THE ALBERTYPE CO., NEW YORK.

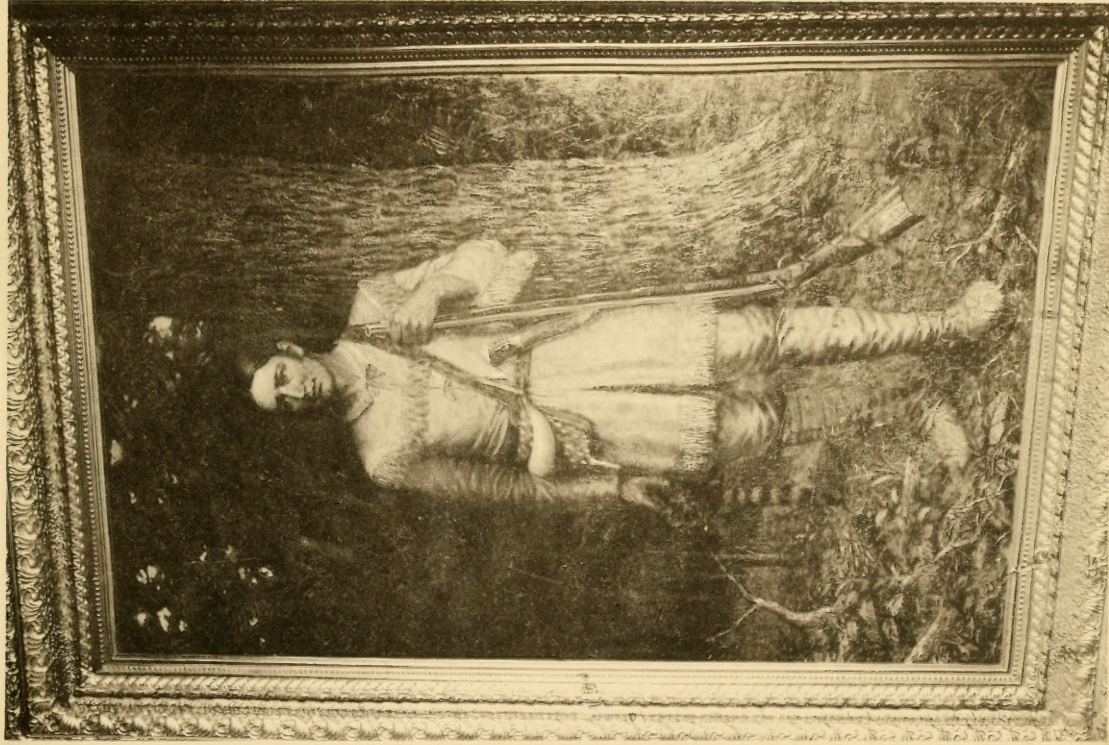
F394
.S2 S23

1589 D10
30 Ap 45

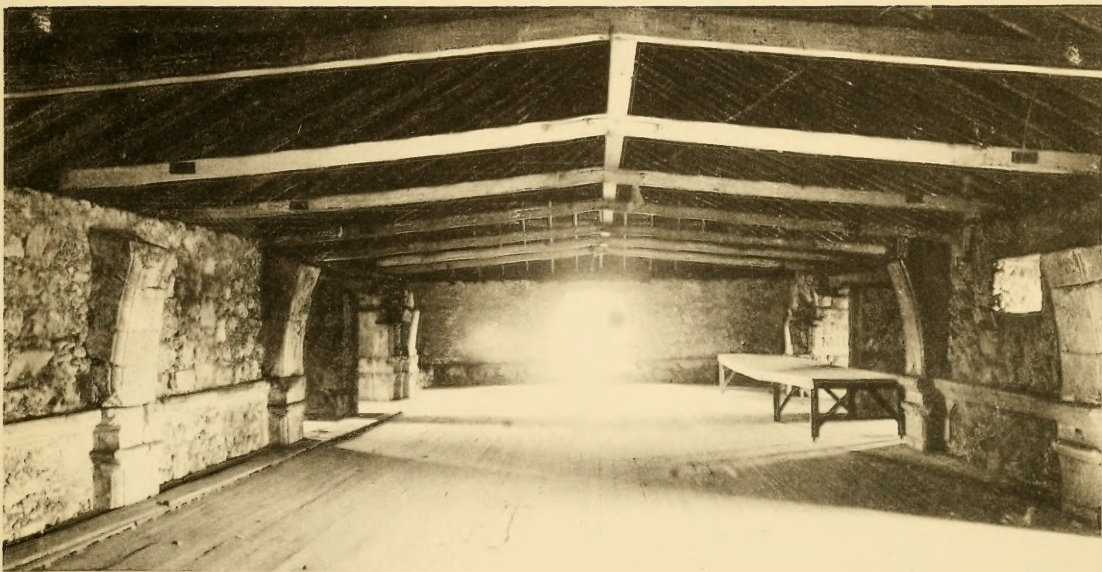
May 15 45



THE ALAMO.



PORTRAIT OF DAVID CROCKETT—THE ALAMO.



THE ALAMO—UPPER STORY.



SAN FERNANDO CATHEDRAL.



A PEPTORIAS SELLER.



POST OFFICE.



POULTRY AND VEGETABLE MARKET - MILITARY PLACE.



CITY HALL.



MILL BRIDGE—SAN ANTONIO RIVER.



CASINO.



VIEW IN SAN PEDRO PARK.



TURNER HILL.



OPERA HOUSE AND MEXICAN CONSULATE—ALAMO PLAZA.



A MEXICAN SUPPER.



2

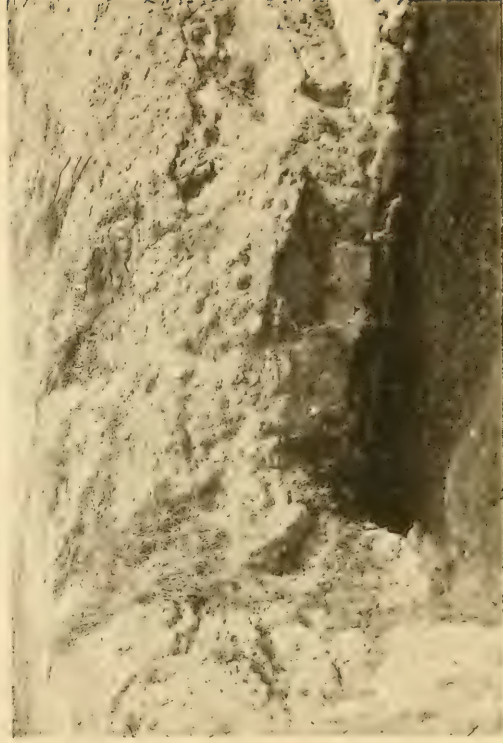
MOSS COVERED LIVE OAKS.



MAVERICK BANK.
E. HOUSTON STREET, FROM THE POST OFFICE.



LOVERS' OAK—SAN PEDRO SPRINGS.



THE SPRING—SAN PEDRO PARK.





MENGER HOTEL.





MILAN SQUARE - HAYMARKET AND SANTA ROSA HOSPITAL.





TEXAS COWBOYS—A LITTLE FUN.



SAN ANTONIO NATIONAL BANK.





ON THE SAN ANTONIO RIVER.





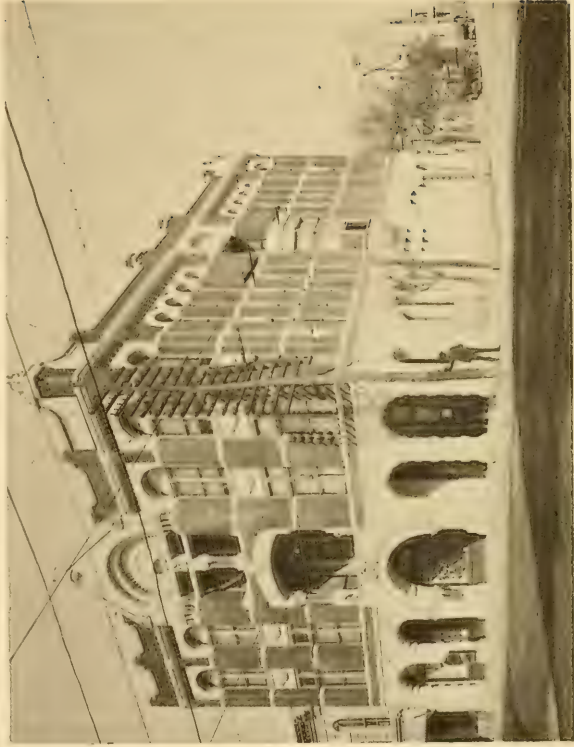
ALAMO FIRE INSURANCE BLD'G AND NAVARRO STREET BRIDGE.



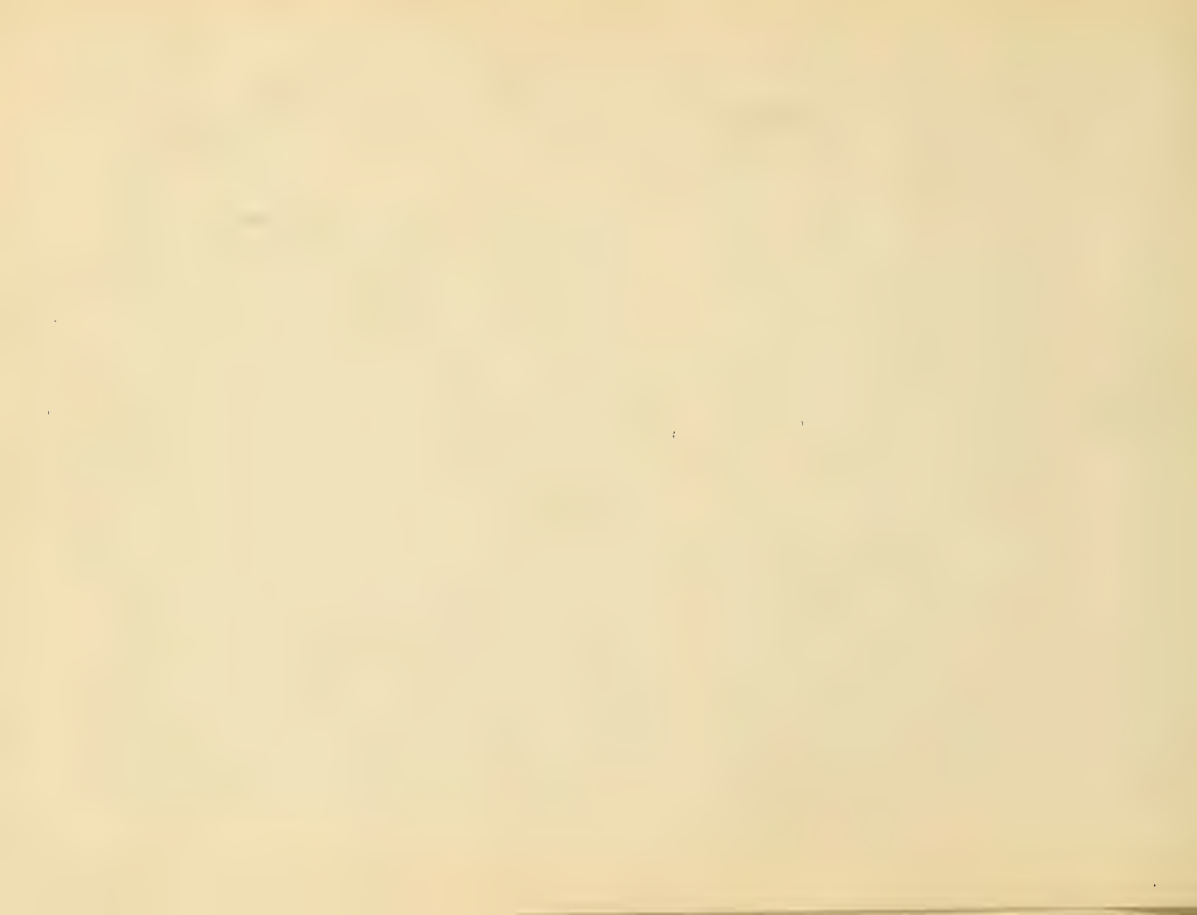
LOCKWOOD NATIONAL BANK.

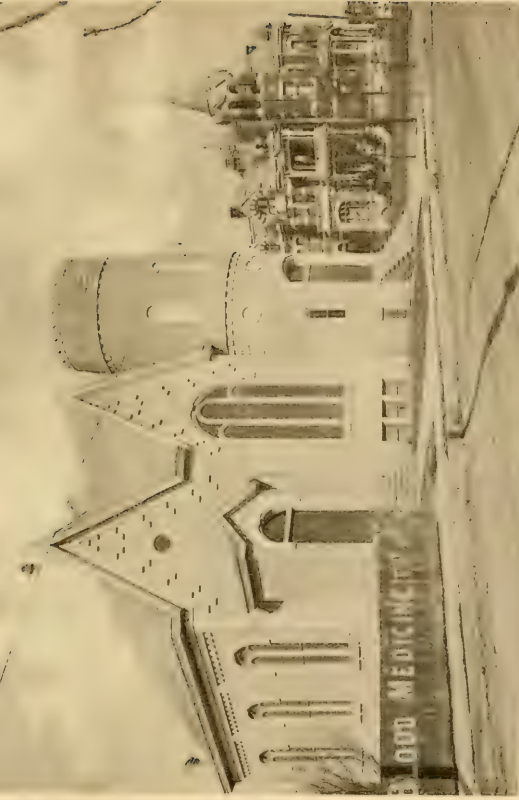


ST. MARKS EPISCOPAL CHURCH AND PARSONAGE.



WRIGHT BUILDING—E. HOUSTON STREET.





RES. COL. W. B. WRIGHT.

TRAVIS SQUARE METHODIST CHURCH.



TRAVIS SQUARE.

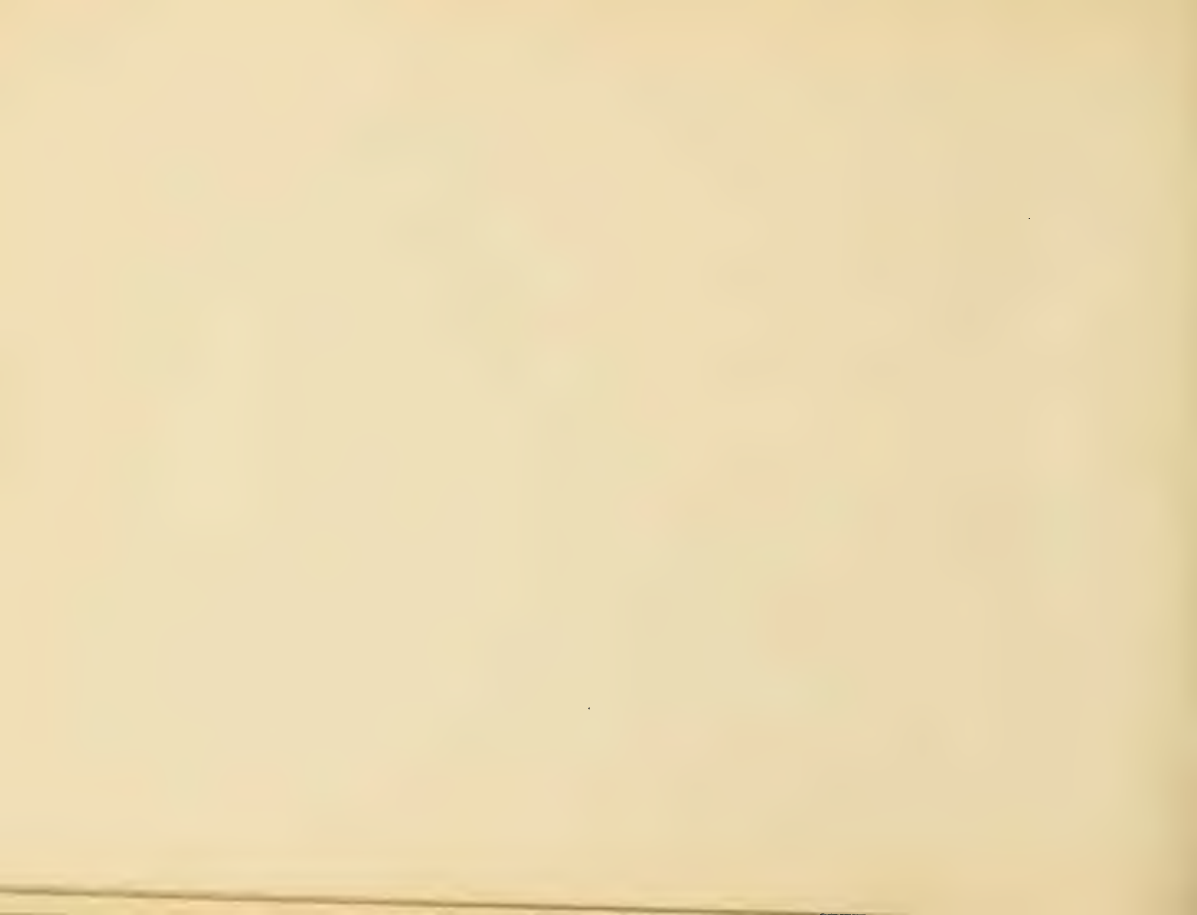




A MEXICAN BURRO.

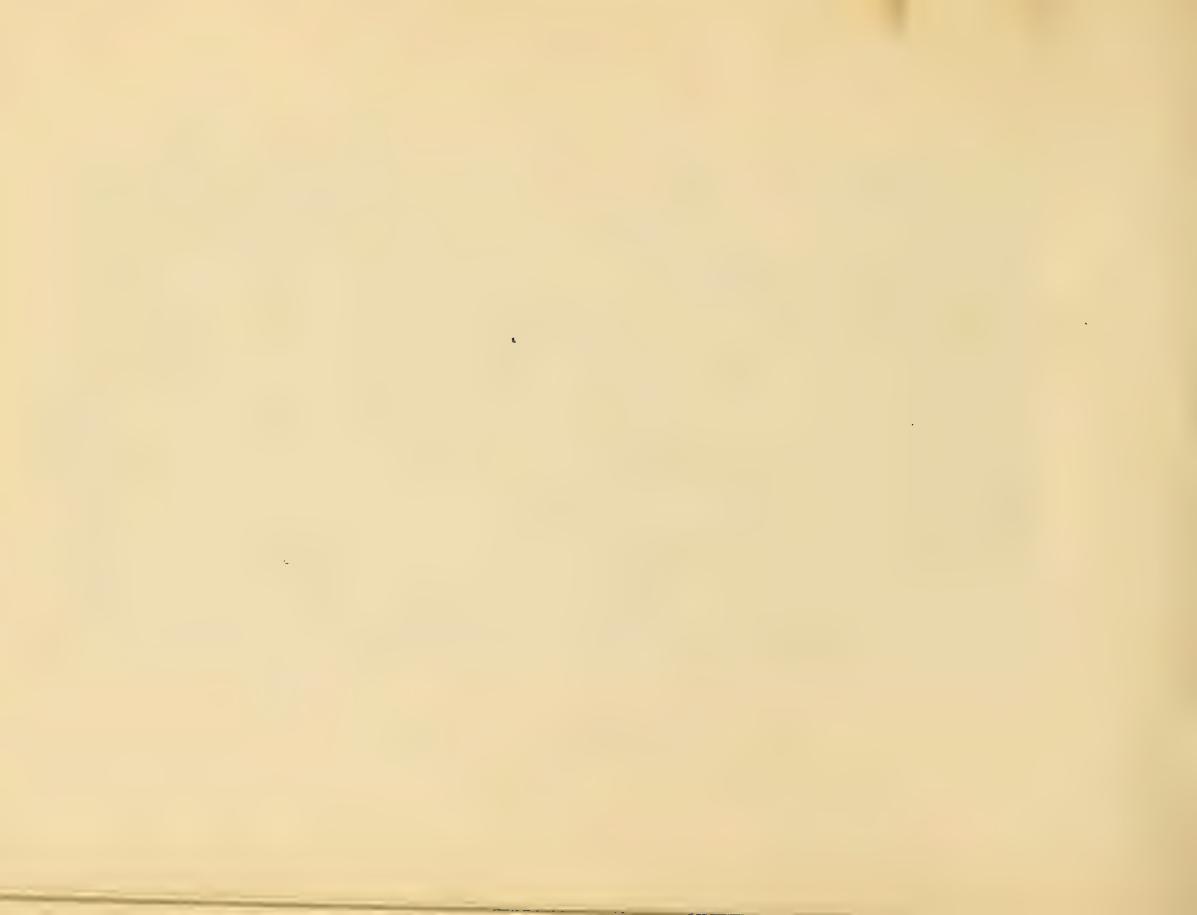


ST. JOSEPH'S CATHEDRAL, (GERMAN).



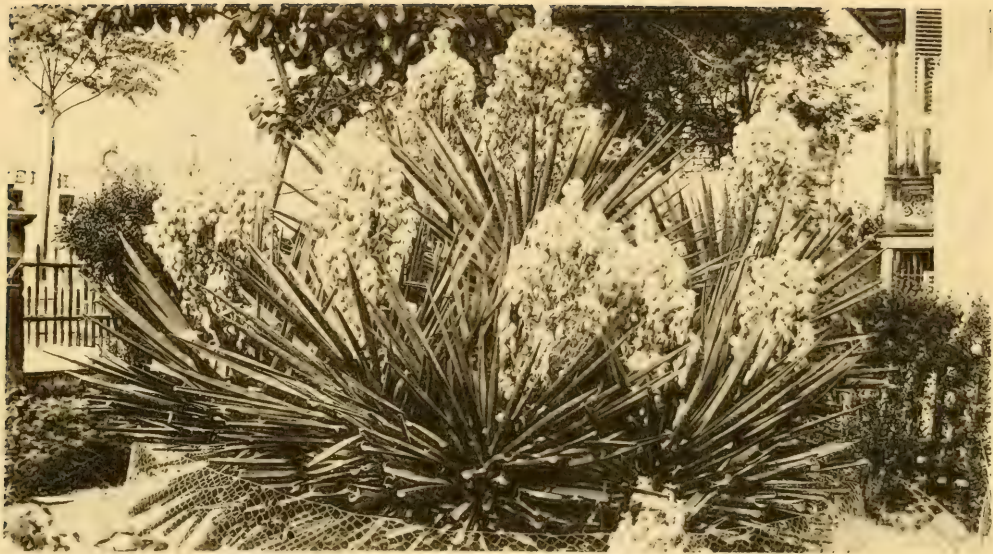


MEXICANS PREPARING BREAKFAST.





THE TOWER—GOVERNMENT POST.

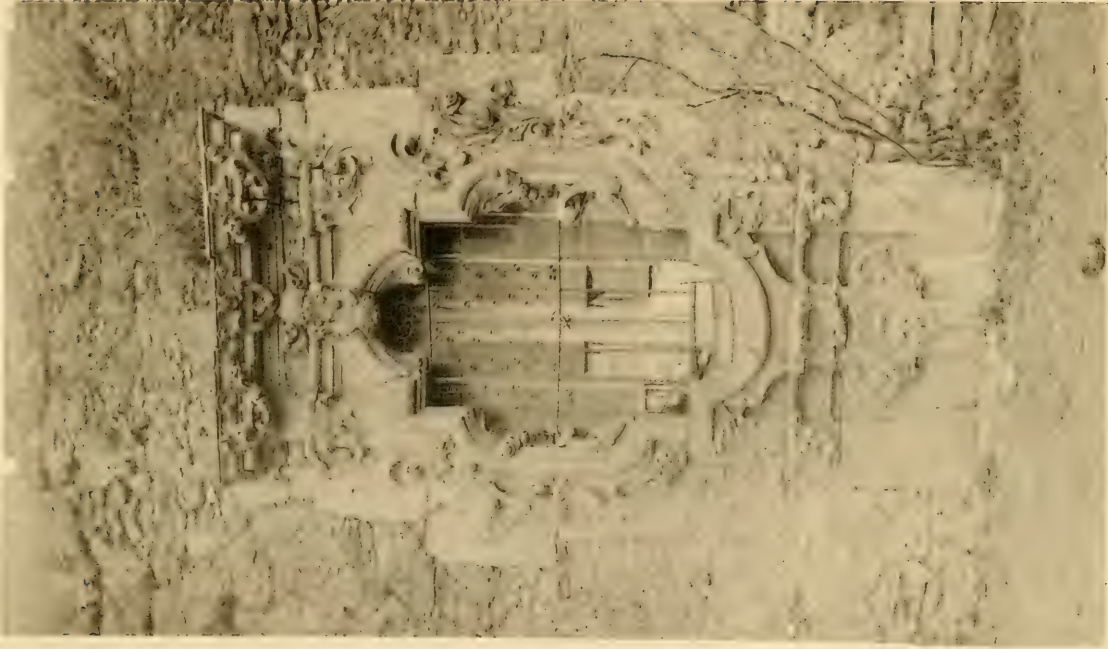


SPANISH DAGGER AND YUCCA GRANDIFLOA.





INSANE ASYLUM.



WINDOW—MISSION SAN JOSÉ.



Portal

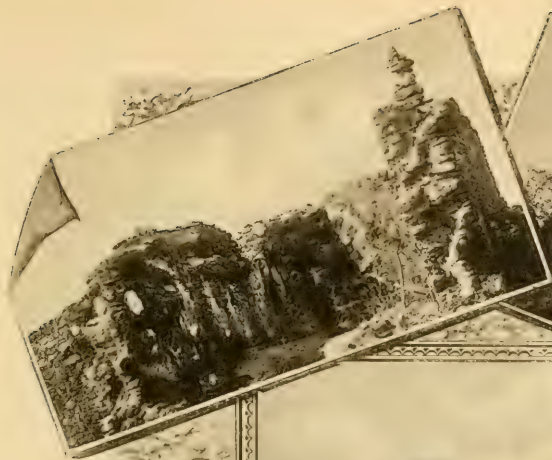
Interior

MISSION SAN JOSE.



MISSION SAN JOSE.





MISSION DE LAS CABRAS.

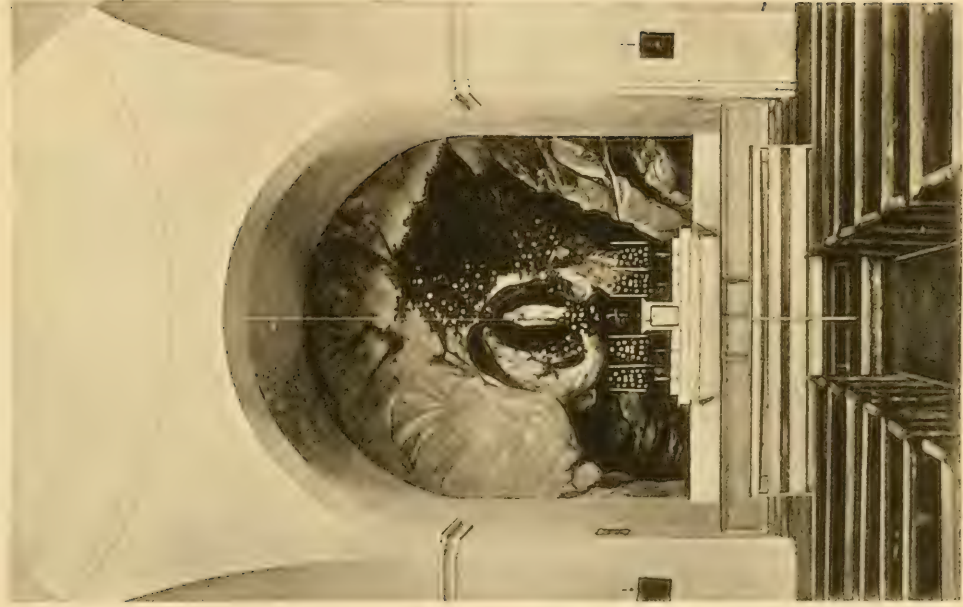
MISSION SAN FRANCISCO DE LA ESPADA.
THE GRANARY OF MISSION SAN JOSE.





MISSION DE LA CONCEPCION DE ACOMULCO.





INTERIOR OF MISSION CONCEPCION DE ACUNA.



MISSION SAN JUAN DE CAPISTRAN.



AQUEDUCT AT MISSION SAN JUAN.



MEXICAN BIRD CAGE MAKER.



LIBRARY OF CONGRESS



0 014 649 348 8

